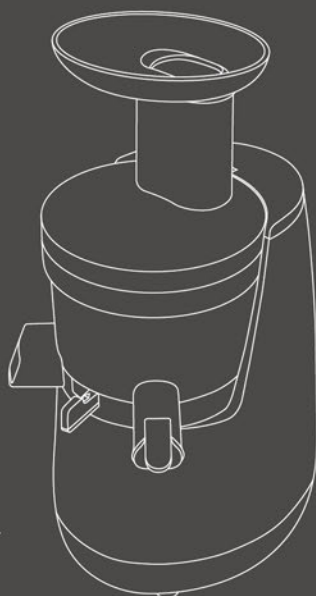


Hurom

HO-SERIES



02

Important Safeguards

03

Precautions for safe use

05

How to assemble

08

Parts and Accessories

09

How to use

10

Using the Auto-Pulp lever

11

How to use the control lever by ingredients

12

Cautions during operation

13

When the auger stops during operation

14

Before requesting for repair

15

Product Specifications / Warranty

For Household Use Only

- 1 Read the instructions carefully before using.
- 2 Keep these instructions, where easily accessible.
- 3 Use only with 120V AC power supply.
- 4 Design and product development may be upgraded without notice.
- 5 Any quality improvements are subject to change without notice.

IMPORTANT SAFEGUARDS

The following basic safety precautions apply when using electrical appliances:

1. Read all instructions.
2. Do not touch surfaces that may be hot. Use handles or knobs provided.
3. To protect against electrical shock do not immerse cord, plugs, portable appliances (or other specific part or parts) in water or other liquid.
4. Close supervision is necessary when any appliance is used by or near children.
- 5-1. Portable - Remove plug from outlet when the appliance is not in use, before putting on or taking off parts, and before cleaning. Allow to cool before handling.
- 5-2. Permanently installed - Make sure appliance is OFF when not in use, before putting on or taking off parts, and before cleaning.
6. Portable - Do not operate any appliance with a damaged cord or plug or after the appliance malfunctions or is dropped or damaged in any manner. Return appliance to the nearest authorized service facility for examination, repair, or electrical or mechanical adjustment.
7. The use of accessory attachments not recommended by the appliance manufacturer may cause injuries.
8. Do not use outdoors (this item may be omitted if the product is specifically intended for outdoor use).
9. Do not let cord hang over edge of table or counter or touch hot surfaces.
10. Do not place on or near a hot gas or electric burner or in a heated oven.
11. Extreme caution must be used when moving an appliance containing hot oil or other hot liquids.
12. Where applicable, always attach plug to appliance and check that the control is OFF before plugging cord into wall outlet. To disconnect, turn the control to OFF, then remove plug from wall outlet.
13. Do not use appliance for other than intended use.
14. Avoid contacting moving parts.

SAVE THESE INSTRUCTIONS

Caution Hazards or unsafe practices that could result in minor personal injury or appliance damage.

1. Do not operate without locking the hopper properly.
2. Do not attempt to juice hard materials such as large seeds (those that cannot be swallowed or chewed), pits, or ice.
3. Do not attempt to move the base while operating.
4. Do not put any parts into the dishwasher or use abrasives to clean. Exposure to heat or abrasives can cause damage.
5. If food gets stuck in the feeding tube, do not use anything other than provided pusher .
6. Do not use for more than 30 minutes continuously (for household use only).
7. If the appliance gives off an unpleasant smell or smoke or overheats, stop using immediately and contact customer service. *When using a new appliance, it may give off a smell which will disappear naturally over time.
8. Do not input fruit preserved in sugar, honey, alcohol, etc, as the hopper may not open easily.
9. Always unplug the appliance after use.



Precautions for safe use

1. You should read <Precautions for safe use>
2. You should follow <Precautions for safe use>
3. Precautions are classified as follows.



Warning When violating the labeling requirement, it may cause serious injury or death.

• **DO NOT PLUG IN NOR UNPLUG WITH WET HANDS.** It may cause electric shock or injury.

• **DO NOT USE OTHER THAN 120V AC.** It may cause electric shock, fire or abnormal performance. If the voltage is different, it may shorten the life of the motor or cause a failure.

• **PLUG THE POWER CORD CORRECTLY AND PUSH IT TIGHT IN A WALL SOCKET.**

It may cause an electric shock or a fire.

• **IF THE SUPPLY CORD IS DAMAGED, IT MUST BE REPLACED BY THE MANUFACTURER ITS SERVICE OR SIMILARLY QUALIFIED PERSONS IN ORDER TO AVOID A HAZARD.**

If the power cord is damaged, it may cause electric shock or fire.

• **NEVER ALTER THE APPLIANCE. ALSO, DO NOT DISASSEMBLE OR REPAIR BY YOURSELF. DO NOT INSERT FINGERS, FOREIGN SUBSTANCES OR OBJECTS SUCH AS PINS INTO GAPS OR HOLES IN THE BASE.**

It may cause a fire, electric shock or failure. For any technical support, contact the authorized local Customer Care Center.

• **WHEN THE POWER CORD, WIRE WAS BROKEN OR DAMAGED OR THE PLUG-IN PART BECAME LOOSE, DO NOT OPERATE IT.** It may cause electric shock, fire or injury.

• **DO NOT MOISTEN THE BASE OR SPLASH WATER ON THE BASE.**

Be careful not to let any liquids or other substances get into the switch on the appliance.

DO NOT OPERATE THE SWITCH WITH WET HANDS. It may cause an electric shock or fire.

• **FOR SAFETY, MUST DO GROUNDING CONNECTION. ALSO, DO NOT DO THE GROUNDING ON GAS PIPE, PLASTIC WATER PIPE, TELEPHONE WIRE, ETC.**

It could cause electric shock, fire, malfunction or explosion. Be sure to use the electrical outlet with ground connection.

• **NEVER DISASSEMBLE THE CHAMBER SET DURING OPERATION OR INSERT FINGERS, FOREIGN OBJECTS SUCH AS FORKS, SPOONS, ETC. INTO HOPPER CHUTE OR JUICE OUTLET.** It may cause injury, accident or failure.

• **APPLIANCES CAN BE USED BY PERSONS WITH REDUCED PHYSICAL, SENSORY OR MENTAL CAPABILITIES OR LACK OF EXPERIENCE AND KNOWLEDGE IF THEY HAVE BEEN GIVEN SUPERVISION OR INSTRUCTION CONCERNING USE OF THE APPLIANCE IN A SAFE WAY AND IF THEY UNDERSTAND THE HAZARDS INVOLVED. CHILDREN SHALL NOT PLAY WITH THE APPLIANCE. CLEANING AND USER MAINTENANCE SHALL NOT BE MADE BY CHILDREN. THIS APPLIANCE SHALL NOT BE USED BY CHILDREN. KEEP THE APPLIANCE AND ITS CORD OUT OF REACH OF CHILDREN.**



Caution When violating the labeling requirement, it may cause serious injury or damage to the appliance.

• **DO NOT OPERATE WITHOUT LOCKING THE HOPPER PROPERLY.** It may cause an injury or a failure.

• **WHEN DETECTING A GAS LEAK, DO NOT INSERT THE POWER CORD INTO ITS SLOT. OPEN THE WINDOW TO VENTILATE FULLY AND IMMEDIATELY.** It may cause injury or failure.

• **NEVER PUT A FINGER, FORK OR SPOON, ETC. INTO JUICE OUTLET.** It may cause injury or failure.

• **IF AUGER ROTATION IS STOPPED IN NORMAL OPERATION, PRESS [REVERSE/REV] BUTTON AND HOLD FOR 2~3 SECONDS AND THEN AFTER REVERSE OPERATION IS COMPLETELY STOPPED, PRESS [ON] BUTTON AGAIN.** If such a stop event continues during the operation, the parts may be damaged and performance may be deteriorated due to overheating in a motor. When the problem continues, immediately stop the appliance and contact the local Customer Care Center.

• **DURING THE OPERATION, DO NOT ATTEMPT TO MOVE THE BASE, DISASSEMBLE THE CHAMBER SET OR PARTS AND TRY TO LOCK THEM.**

It may cause an injury or a failure. Any act of event needed, switch off first and unplug the power cord.

• **WHEN USING THE APPLIANCE, BE CAREFUL FOR A NECKTIE, LONG NECKLACE, SCARF, ETC. NOT TO BE ENTANGLED INTO HOPPER CHUTE.** It may cause injury, failure or breakage.

• **PLACE THE APPLIANCE ON A FLAT AND STABLE SURFACE.** It may cause injury or failure.

• **DO NOT OPERATE THE APPLIANCE FOR MORE THAN 30 MINUTES AT A TIME.**

It may cause a motor failure due to overheating. Cool it down sufficiently about 5 minutes and operate it again.

• **WHEN PLACING INGREDIENTS INTO THE HOPPER CHUTE, ONLY USE THE PUSHER PROVIDED.** It may cause injury or failure.

• **DO NOT ALLOW A SEVERE SHOCK TO THE APPLIANCE OR DROP IT.** It may cause electric shock, fire or damage.

• **IF THE APPLIANCE GIVES OFF AN UNPLEASANT SMELL OR EXCESSIVE HEATING, SMOKE, STOP USING IMMEDIATELY AND CONTACT THE LOCAL CUSTOMER CARE CENTER.** When using a new appliance, it gives off a smell and the smell disappears naturally over time.

• **ALWAYS UNPLUG THE APPLIANCE AFTER USE. ALWAYS DISCONNECT THE APPLIANCE FROM THE SUPPLY IF IT IS LEFT UNATTENDED AND BEFORE ASSEMBLING, DISASSEMBLING OR CLEANING. WHEN UNPLUGGING THE POWER CORD, MAKE SURE TO HOLD THE POWER CORD.** Pulling on the wire to unplug may cause electric shock or fire.

• **DO NOT WASH AT HIGH TEMPERATURES OF 80°C(176°F) OR HIGHER. DO NOT PUT THE APPLIANCE IN A DISHWASHER, A DRYER OR A MICROWAVE ETC.**

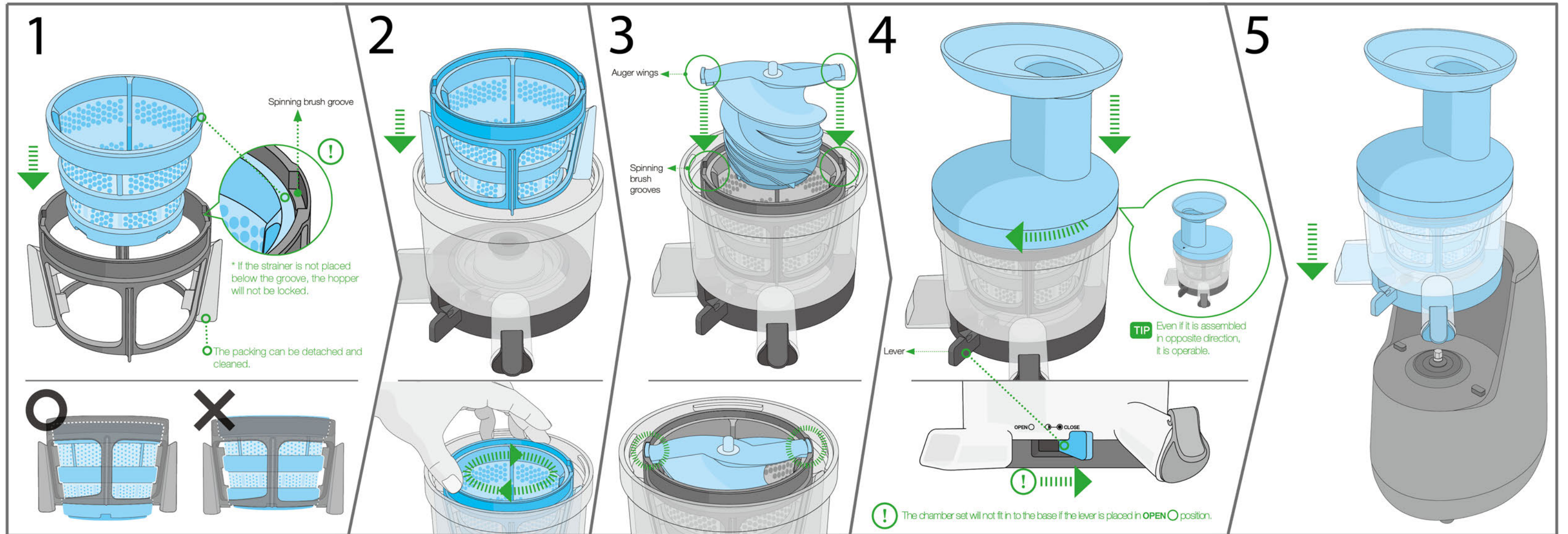
It may cause a failure or parts deformation.

• **THE APPLIANCE WEIGHS ABOUT 6.2KG (13.6LB). WHEN MOVING THE APPLIANCE, ENSURE TO MOVE IT HOLDING GRIPS TIGHTLY AT THE BASE BOTTOM WITH BOTH HANDS.**

If attempting to hold chamber or the edge of the base, the base falls causing an injury or failure.

How to assemble

HUROM



Assemble the strainer under the groove of spinning brush just like from the picture.

If they are not completely assembled, the chamber set will not be closed.

Put the assembled part in proper place by moving left and right in the chamber just like the picture no. 1.

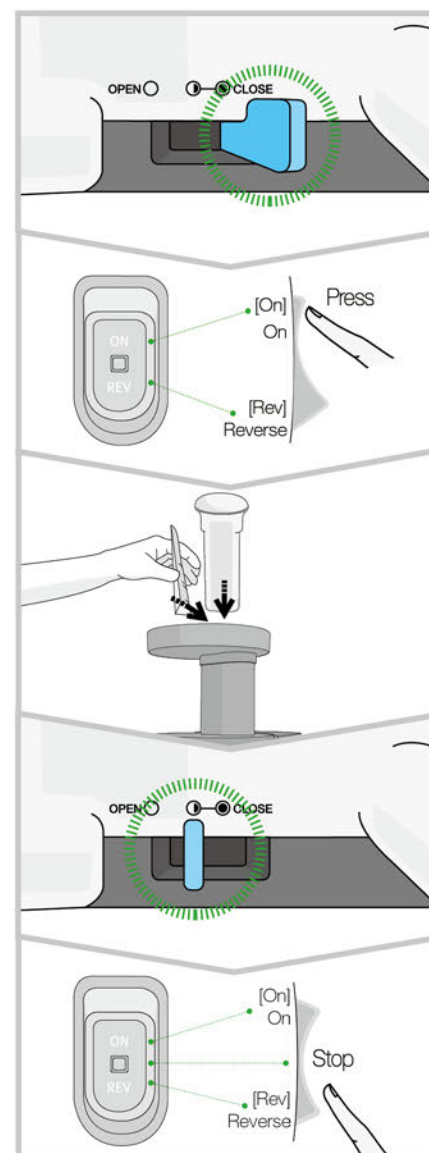
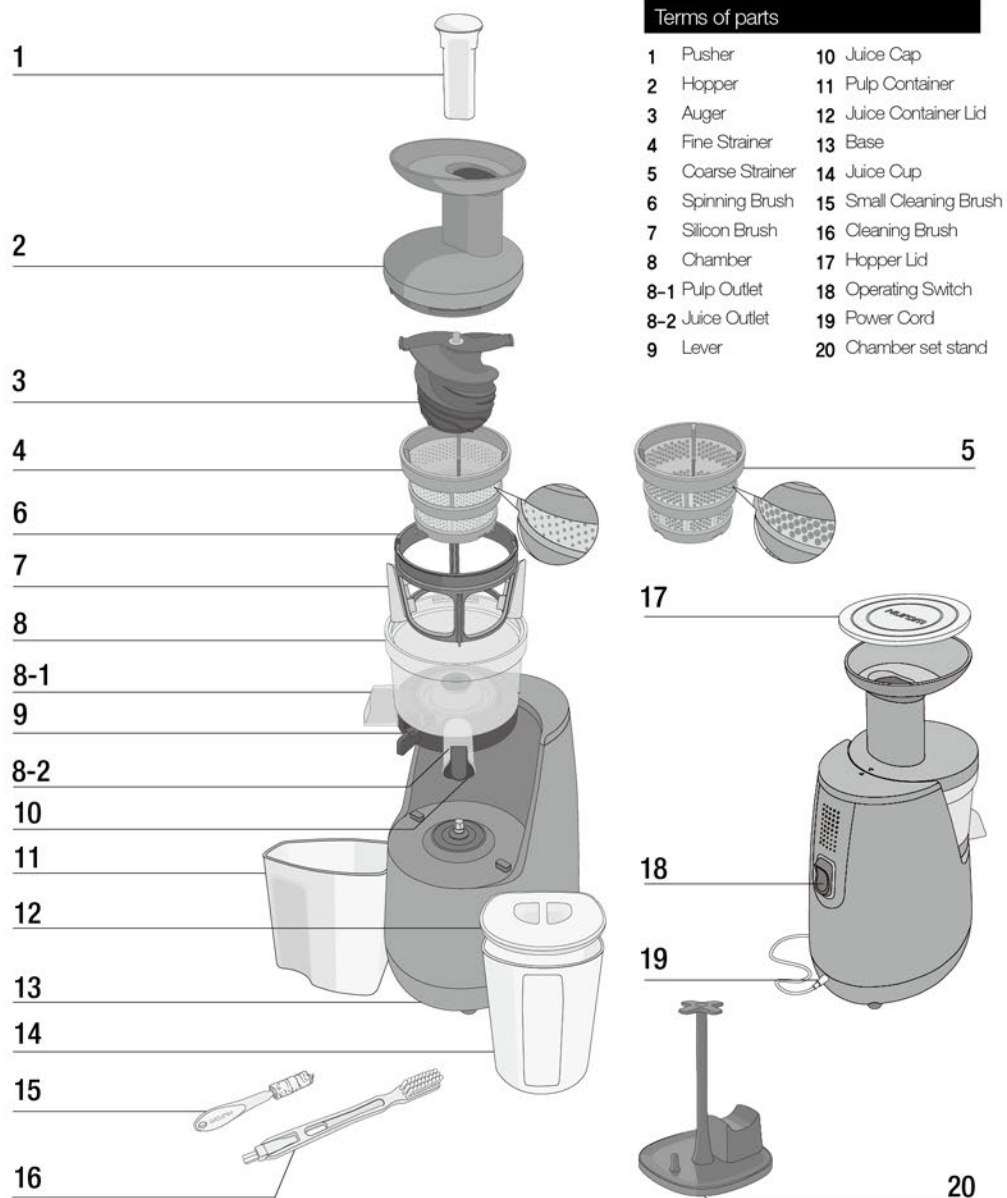
Assemble the auger like the picture.

Put the auger by turning it to fit in the spinning brush grooves.

After putting the hopper on the chamber, turn it clockwise until it is locked completely.

! Make sure the lever is placed in **CLOSE** position.

Mount the chamber set on the base.



1 Place the lever in the **CLOSE** position before operating.

2 Press [ON] button to start.

3 Put ingredients gradually in the hopper chute and press with the pusher.

4 Put the lever in half-closed (●) position before putting the last ingredients.
The hopper will be opened easily as long as the residues in the strainer are released.

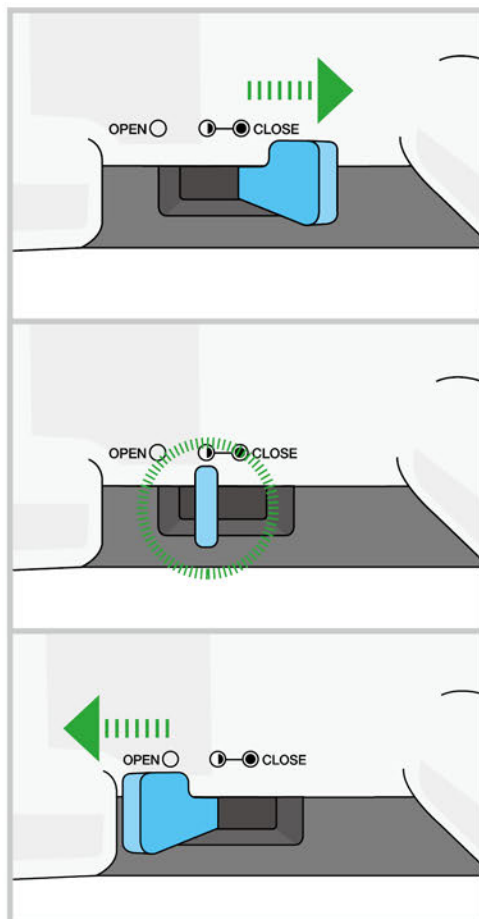
5 After extraction is completed, place the switch in stop position to stop.

! When using [ON] or [Rev] button, make sure that the auger stops completely.

Using the Auto-Pulp lever

How to use lever

You can open and close the extraction packing easily.



Preparation, Extraction Mode

For general ingredients, the extraction rate is good when you close (● **CLOSE**) the lever during operation.

However, for fruits which have hard seeds such grapes, rubus coreanus, pomegranate you close the lever during operation and then change it to half-closed (●) position when juice begins to come out.

Completion, Simple Cleaning Mode

Release the residues in half-closed (●) position of the lever when putting in the last ingredients. The hopper will be opened easily as long as the extracted residues are released.

For Simple Cleaning Mode, put the lever in half-closed (●) position and release the residues.

Cleaning Mode

When detaching and cleaning the chamber, put the lever completely in (○ **OPEN**) position.

You can easily and conveniently clean the chamber.

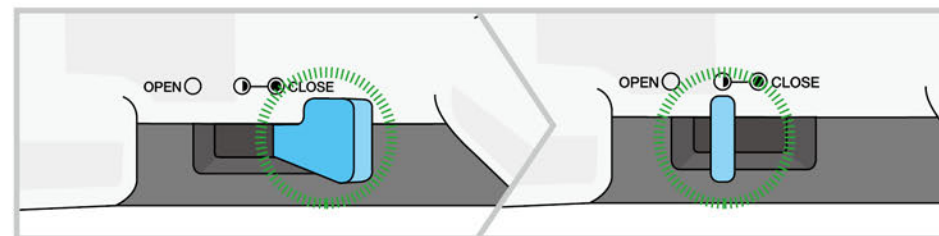
 When it is hard to open Hopper after operation.

- Put the lever in half-closed (●) position and press Reverse button for 3~4 seconds. Repeat this for 2~3 time and the hopper will be opened easily.

How to use the control lever by ingredients

Ingredients

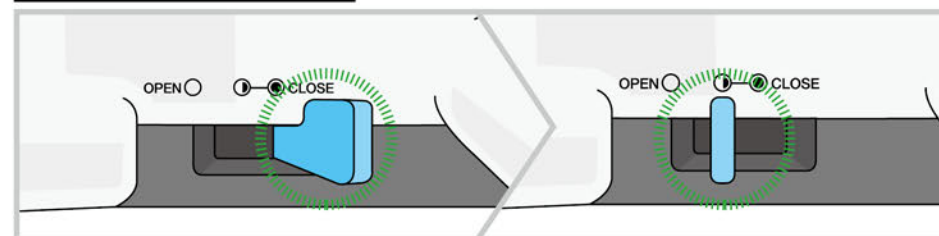
Apple, pear, melon, watermelon, strawberry, blueberry, orange, grapefruits, lemon, mango, plum, peach, cherry, persimmon, pineapple, wheat-grass, parsley, celery, dandelion, carrot, ginger, potato, beet, tomato, paprika, broccoli, cauliflower, cabbage, kale, spinach
(Cooked) sweet potato, pumpkin, corn, nuts, almonds, beans, sesame



1. Start from control lever in [● **CLOSE**] position.
2. When extraction is almost finished, place the control lever into (●) half-opened position.

Ingredients with seed

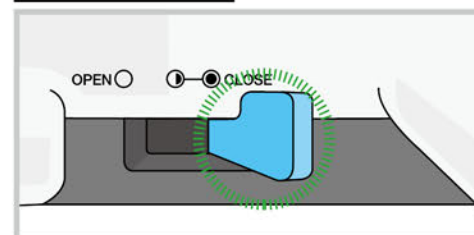
Grapes, pomegranate, blackberry, kiwi



1. Start from control lever in [● **CLOSE**] position.
2. When juice starts to come out, place the control lever into (●) half-opened position.

Mix with milk

Banana, strawberry, blueberry, etc.



1. Start from control lever in [● **CLOSE**] position.

Cautions during operation

● Ingredients which needs caution

- Fruits with hard seeds such as persimmon, Japanese apricot, lemon, plum, peach etc. that are hard to chew with our teeth should be pitted before extraction.

- For stalk vegetables with strong fiber such as water parsleys, celery etc. cut them into small size about 3~4cm before putting them into the hopper chute.

- Do not put in sesame, coffee beans, bark of the tree, Chinese pepper, etc. which cannot be extracted.

- Do put in fruits preserved in alcohol, sugar, honey, etc. (grapes, apricot, berries, etc) and enzymes (glasswort, houseleek, etc.). It may cause damage or failure.

● We recommend you drink green vegetable juice and fruit juice immediately after extraction rather than keeping them for long time.

● You may use for crushing spice (garlic, red pepper), but not for grinding grain. It may cause damage or failure.

● Do not re-squeeze residues expelled through the pulp outlet.
Soft fruits can be re-squeezed.

● Do not operate the appliance before putting in the ingredients.

● Do not use the appliance for more than 30 minutes continuously.

- It may cause a failure due to overheating of the motor.
When using continuously, stop it and leave it 5 minutes of interval and then you may use it again.

● Never insert finger, fork or spoon etc. into juice outlet during the operation.

- Inserting such as chopsticks etc. into Juice outlet during operation may stuck in the spinning brush and may cause damage of parts.

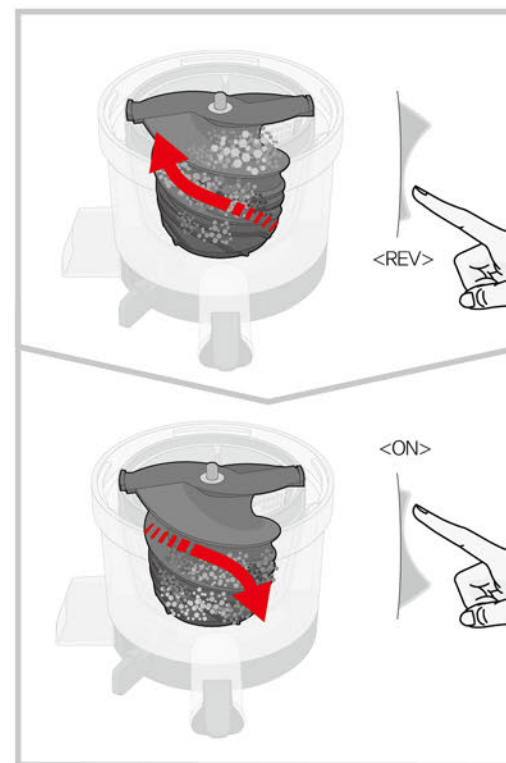
● Do not press the ingredients with anything except the pusher.
-It may stuck to the screw and cause injury and failure.

● Do not operate the switch with wet hands.

- It may cause electric shock or fire. Do not put foreign objects near the switch.

Note Frozen fruit or withered ingredients that have been stored in the refrigerator for a long time may give us less extracted amount or may even be impossible.

When the auger stops during the operation



1 Press [Rev] button on the operating switch for 3~5 seconds and stop it. Repeat this 2~3times.

▶ [Rev] is the button to push back the ingredients upward.
[Rev] only works while pressing the button, and the rotation of the auger stops If you release the button.

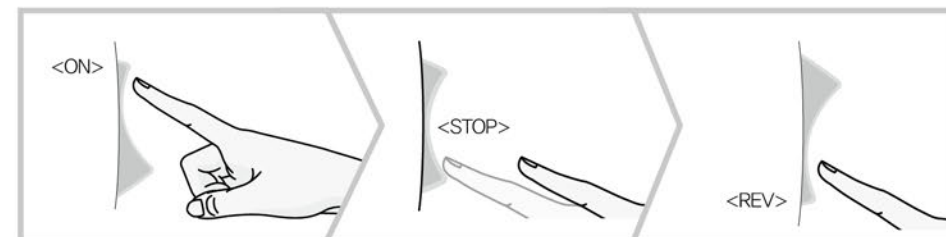
2 Press [On] button to operate after reverse operation completely stops.

▶ When using [ON] or [Rev] button, make sure that the auger stops completely.

Note

Even after following the directions above and still doesn't work, please unplug the power cord and disassemble chamber set, and clean it. And try it again.

Caution when using operation button



In case of reversing during operation, press [Reverse] button short, then you press [Reverse] button for operation.

From the feature of the product, even though you stop the operation, it doesn't stop right away. It rotates slowly then stops. If the rotation stops completely, you may press the button to any direction you want. (Same as when pressing [Extract] during reverse operation)

Please check the details below before contacting Technical Support for repair.

If you need additional information, please contact your local Customer Service Center or visit www.hurom.com. When applying for after-sales service, please have the manufacturer's serial number or bar code available.

The Appliance does not work.

Make sure that the power cord is properly plugged in.

Check if the hopper is assembled properly. If the hopper has not been locked into place, the appliance will not operate for safety reasons.

Check if the appliance is assembled according to the directions in the manual.

Refer to instructions for assembly in the manual or consult with your Customer Service Center for additional assistance.

The hopper does not open.

There might be a lot of residues inside. Put the lever in half-closed position, and press [Extract] button to release residues. Press [Reverse] button for 3~4 seconds and stop it. Repeat this process 2~3 times.

Have you placed any foreign substances or solid objects (hard seed such as persimmon seed) in the juicer?

Press [Reverse] button and push the ingredients back up toward the hopper chute.

Do not attempt to open by force. Please contact your local Customer Service Center for assistance.

The appliance stops during normal operation.

Have you in heavy loads or large pieces of ingredients into the appliance?

Refer to page 9 of the manual and follow the guideline for using [Reverse] button.

If the issue is not resolved after following the above process, please contact your local Customer Service Center.

There are fine lines or scratch marks around the auger.

These are molding marks resulting from the normal manufacturing process.

This is a normal product and there is no problem for use.

Juice leaks over the base.

Have you inserted a lot of ingredients into the hopper chute?



If you insert a large amount of ingredients compared to the pulp outlet, the packing is slightly pushed away, so the juice leaks out of the gap. Do not put too much ingredients by force and just put gradually for extraction.

The Chamber shakes when squeezing.

Slight shaking may be caused by the motor.

Depending on the texture of the ingredient, there may be slight to more pronounced shaking of This is a normal phenomenon as auger rotates and it is not a malfunction. Hard ingredients (e.g carrot, potato, radish, beet, etc.) may cause more shaking than soft ingredients.

Chamber set does not fit into the base.

If the lever is in OPEN  position, the chamber set does not fit in to the base. Before assembling the chamber set, make sure that the lever is in  CLOSE position.

Product Specifications

● Product Name	Hurom Slow Juicer	● Cord Length	1.4 m
● Model Name	HO-SERIES	● Motor	Single-phase induction motor
● Rated Voltage	120 V	● Fuse	250 V 5 A
● Rated Frequency	60 Hz	● Weight	6.2 kg (13.6 lb)
● Rated Power Consumption	150 W	● Outward Dimension	Width 251 mm Length 178 mm Height 411 mm
● RPM	43 rpm	● Rated Operating Hour	Less than 30 minutes

Warranty

● Product name	● Customer name	● Model name
● Supplier	● Date of purchase	
● Address	● Manufacture's serial number	

Important: To better protect your purchase, fill out and mail this form to a local distributor where you purchased the appliance and keep the original receipt.

This certifies that the Hurom Slow juicer is covered under warranty by **HUROM** to be free from defects in material construction and workmanship.

Hurom provides warranty for ten (10) years for the motor and two (2) years for other parts from the date of purchase by the original purchaser. Coverage is valid only with proof of purchase from an Authorized Local Distributor. (No international warranty available)

This warranty does not apply to damages caused by accident, misuse, abuse, commercial use, alteration, failure to follow operating instructions, or damage caused by parts or service unauthorized by **HUROM**. Damages caused by transportation must be claimed with carrier. **HUROM** disclaims all responsibilities for consequential damages from incidental losses caused by use of this appliance.

For service and assistance with technical difficulty, please contact our local customer care center.

HUROM Manufacture : **HUROM**
Hurom webpage : www.hurom.com

MEMO

MEMO

How to trim the ingredients!

Apple, pear, kiwi, oriental melon

Juice fruits like apple, pear, kiwi, oriental melon, etc. put them with seeds and peels. However, apple seeds contain toxicity, so it better to remove them.

Pomegranate, grapes

Separate each grape from the cluster. Peel the pomegranate and use flesh only.

Watermelon, orange, grapefruit

Peel off the skin of watermelon, orange, grapefruit and cut them into right size.

Mango, cherry, peach

Fruits like mango, cherry, peach, or plum, etc. have hard seeds which are hard to swallow. Those seeds might cause stoppage or parts damage, so they must be removed before using it.

Wheat, chives

Put a handful of wheat or chives in not to be scattered.

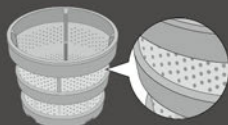
Water parsleys, angelica, celery, kale

Cut fibrous ingredients into small sized less than 3 cm.

* This is a reference about how to trim the ingredients, so if you have allergy please choose your own proper ingredients which agrees with you.

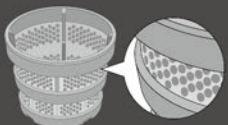
* Please refer to the recipe book for the product usage of each ingredient.

Which one is better, Fine Strainer or Coarse Strainer?



Fine Strainer

Fine strainer has tiny and fine holes good to make clean juice.



Coarse Strainer

Coarse strainer has larger holes so is good to make thick juice with flesh in it.

It is to make juice with soft fruits and thick juice like banana, strawberry, and also useful for smoothie, latte, or soup.

HUROM™

www.hurom.com