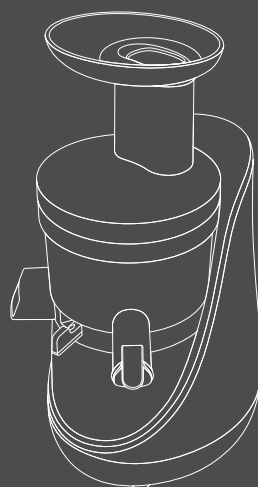


HUROM

HN Series



01

Precautions for safe use

03

Terms of parts

04

How to assemble

07

Disassemble and
cleaning

08

How to use

09

Instructions of control
lever

10

How to use the control
lever by ingredients

11

Cautions during
operation

12

When squeezing screw
stops during operation

13

Before requesting for
repair

14

Product Specifications /
Warranty

Hurom Juicer Household Use (Warranty Included)

1. Read 'Precautions for safe use' (Page 1) and use the appliance properly.
2. After finish reading the manual, keep it in a convenient location for future reference.
3. Do not use it abroad which has different power supply and voltage.
4. Any quality improvements are subject to change without notice.



Precautions for safe use

1. You should read <Precautions for safe use>
2. You should follow <Precautions for safe use>
3. Precautions are classified as follows.



Warning When violating the labeling requirement, it may cause serious injury or death.

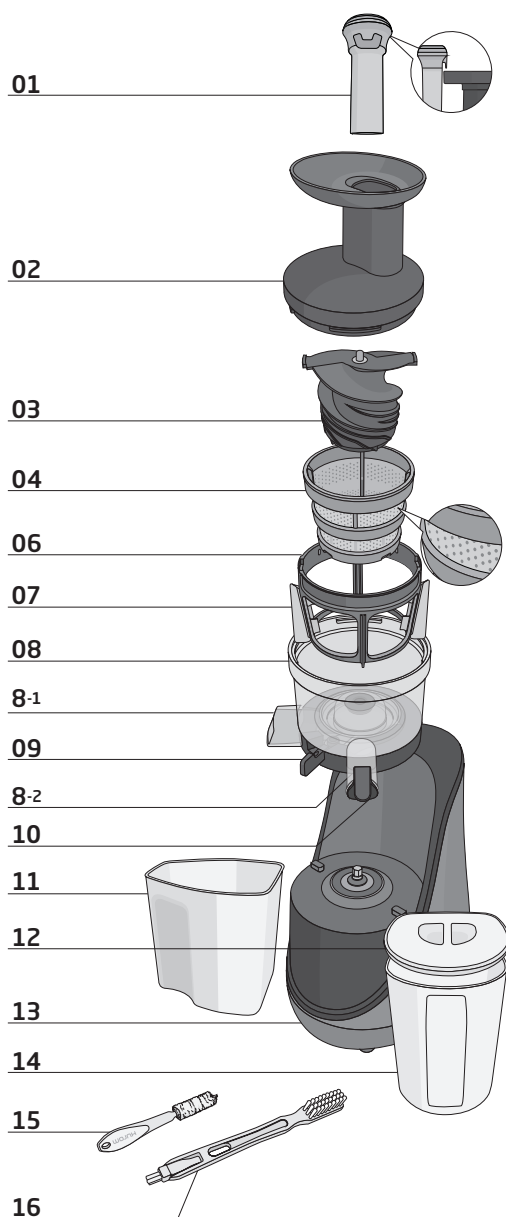
- **DO NOT PLUG IN NOR UNPLUG WITH WET HANDS.** It may cause electric shock or injury.
- **DO NOT USE OTHER THAN 230V - 240V AC.** It may cause electric shock, fire or abnormal performance.
If the voltage is different, it may shorten the life of the motor or cause a failure.
- **PLUG THE POWER CORD CORRECTLY AND PUSH IT TIGHT IN A WALL SOCKET.**
It may cause an electric shock or a fire.
- **IF THE SUPPLY CORD IS DAMAGED, IT MUST BE REPLACED BY THE MANUFACTURER ITS SERVICE OR SIMILARLY QUALIFIED PERSONS IN ORDER TO AVOID A HAZARD.**
If the power cord is damaged, it may cause electric shock or fire.
- **NEVER ALTER THE APPLIANCE. ALSO, DO NOT DISASSEMBLE OR REPAIR BY YOURSELF. DO NOT INSERT FINGERS, FOREIGN SUBSTANCES OR OBJECTS SUCH AS PINS INTO GAPS OR HOLES IN THE BODY.**
It may cause a fire, electric shock or failure. For any technical support, contact the authorized local Customer Care Center.
- **WHEN THE POWER CORD, WIRE WAS BROKEN OR DAMAGED OR THE PLUG-IN PART BECAME LOOSE, DO NOT OPERATE IT.** It may cause electric shock, fire or injury.
- **DO NOT MOISTEN THE BODY OR SPLASH WATER ON THE BODY.**
Be careful not to let any liquids or other substances get into the switch on the appliance.
- **DO NOT OPERATE THE SWITCH WITH WET HANDS.** It may cause an electric shock or fire.
- **FOR SAFETY, MUST DO GROUNDING CONNECTION. ALSO, DO NOT DO THE GROUNDING ON GAS PIPE, PLASTIC WATER PIPE, TELEPHONE WIRE, ETC.**
It could cause electric shock, fire, malfunction or explosion. Be sure to use the electrical outlet with ground connection.
- **NEVER DISASSEMBLE THE CHAMBER SET DURING OPERATION OR INSERT FINGERS, FOREIGN OBJECTS SUCH AS FORKS, SPOONS, ETC. INTO HOPPER CHUTE OR JUICE OUTLET.** It may cause injury, accident or failure.
- **APPLIANCES CAN BE USED BY PERSONS WITH REDUCED PHYSICAL, SENSORY OR MENTAL CAPABILITIES OR LACK OF EXPERIENCE AND KNOWLEDGE IF THEY HAVE BEEN GIVEN SUPERVISION OR INSTRUCTION CONCERNING USE OF THE APPLIANCE IN A SAFE WAY AND IF THEY UNDERSTAND THE HAZARDS INVOLVED. CHILDREN SHALL NOT PLAY WITH THE APPLIANCE. CLEANING AND USER MAINTENANCE SHALL NOT BE MADE BY CHILDREN. THIS APPLIANCE SHALL NOT BE USED BY CHILDREN. KEEP THE APPLIANCE AND ITS CORD AWAY FROM CHILDREN.**



Caution When violating the labeling requirement, it may cause serious injury or damage to the appliance.

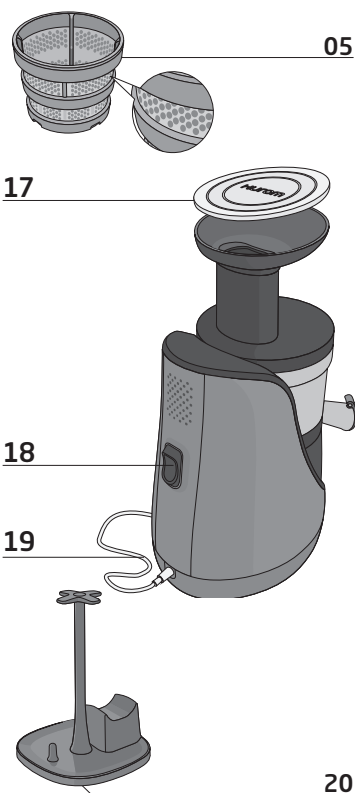
- **DO NOT OPERATE WITHOUT LOCKING THE HOPPER PROPERLY.** It may cause an injury or a failure.
- **WHEN DETECTING A GAS LEAK, DO NOT INSERT THE POWER CORD INTO ITS SLOT. OPEN THE WINDOW TO VENTILATE FULLY AND IMMEDIATELY.** It may cause injury or failure.
- **NEVER PUT A FINGER, FORK OR SPOON, ETC. INTO JUICE OUTLET.** It may cause injury or failure.
- **IF ROTATION OF SQUEEZING SCREW IS STOPPED IN NORMAL OPERATION, PRESS [REVERSE/REV] BUTTON AND HOLD FOR 2~3 SECONDS AND THEN AFTER REVERSE OPERATION IS COMPLETELY STOPPED, PRESS [ON] BUTTON AGAIN.** If such a stop event continues during the operation, the parts may be damaged and performance may be deteriorated due to overheating in a motor. When the problem continues, immediately stop the appliance and contact the local Customer Care Center.
- **DURING THE OPERATION, DO NOT ATTEMPT TO MOVE THE BODY, DISASSEMBLE THE CHAMBER SET OR PARTS AND TRY TO LOCK THEM.**
It may cause an injury or a failure. Any act of event needed, switch off first and unplug the power cord.
- **WHEN USING THE APPLIANCE, BE CAREFUL FOR A NECKTIE, LONG NECKLACE, SCARF, ETC. NOT TO BE ENTANGLED INTO HOPPER CHUTE.** It may cause injury, failure or breakage.
- **PLACE THE APPLIANCE ON A FLAT AND STABLE SURFACE.** It may cause injury or failure.
- **DO NOT OPERATE THE APPLIANCE FOR MORE THAN 30 MINUTES AT A TIME.**
It may cause a motor failure due to overheating. Cool it down sufficiently about 5 minutes and operate it again.
- **WHEN PLACING INGREDIENTS INTO THE HOPPER CHUTE, ONLY USE THE PUSHER PROVIDED.** It may cause injury or failure.
- **DO NOT ALLOW A SEVERE SHOCK TO THE APPLIANCE OR DROP IT.** It may cause electric shock, fire or damage.
- **IF THE APPLIANCE GIVES OFF AN UNPLEASANT SMELL OR EXCESSIVE HEATING, SMOKE, STOP USING IMMEDIATELY AND CONTACT THE LOCAL CUSTOMER CARE CENTER.** When using a new appliance, it gives off a smell and the smell disappears naturally over time.
- **ALWAYS UNPLUG THE APPLIANCE AFTER USE. ALWAYS DISCONNECT THE APPLIANCE FROM THE SUPPLY IF IT IS LEFT UNATTENDED AND BEFORE ASSEMBLING, DISASSEMBLING OR CLEANING. WHEN UNPLUGGING THE POWER CORD, MAKE SURE TO HOLD THE POWER CORD.** Pulling on the wire to unplug may cause electric shock or fire.
- **DO NOT WASH AT HIGH TEMPERATURES OF 80°C(176°F) OR HIGHER. DO NOT PUT THE APPLIANCE IN A DISHWASHER, A DRYER OR A MICROWAVE ETC.**
It may cause a failure or parts deformation.
- **THE APPLIANCE WEIGHS ABOUT 6.3KG. WHEN MOVING THE APPLIANCE, ENSURE TO MOVE IT HOLDING GRIPS TIGHTLY AT THE BODY BOTTOM WITH BOTH HANDS.**
If attempting to hold chamber or the edge of the body, the body falls causing an injury or failure.

Terms of parts

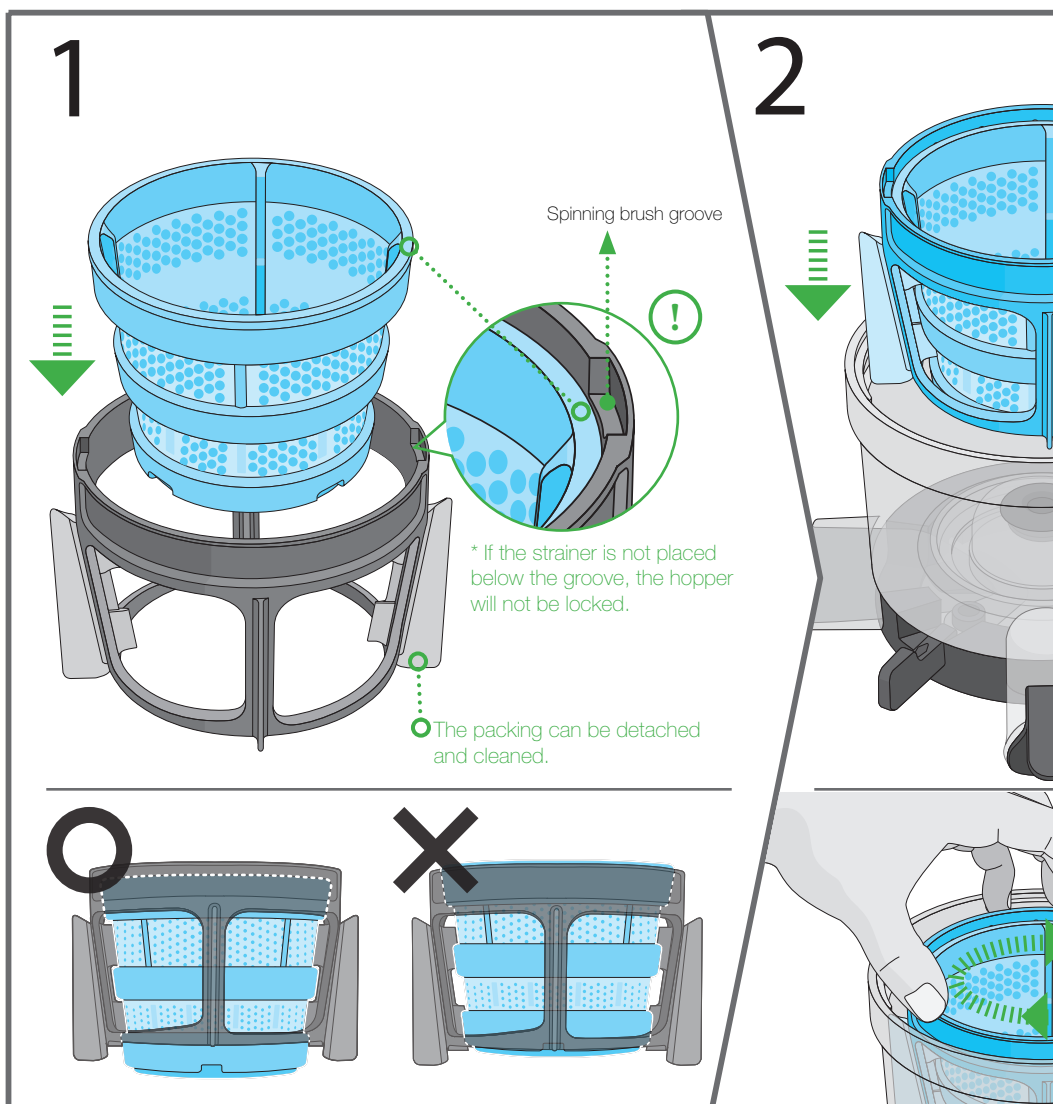


Terms of parts

- | | |
|--------------------|-------------------------|
| 01 Pusher | 10 Juice Cap |
| 02 Hopper | 11 Pulp Container |
| 03 Squeezing Screw | 12 Juice Container Lid |
| 04 Fine Strainer | 13 Body |
| 05 Coarse Strainer | 14 Juice Container |
| 06 Spinning Brush | 15 Small Cleaning Brush |
| 07 Silicone brush | 16 Cleaning Brush |
| 08 Chamber | 17 Hopper Lid |
| 8-1 Pulp Outlet | 18 Operating Switch |
| 8-2 Juice Outlet | 19 Power Cord |
| 09 Control lever | 20 Chamber Set Stand |



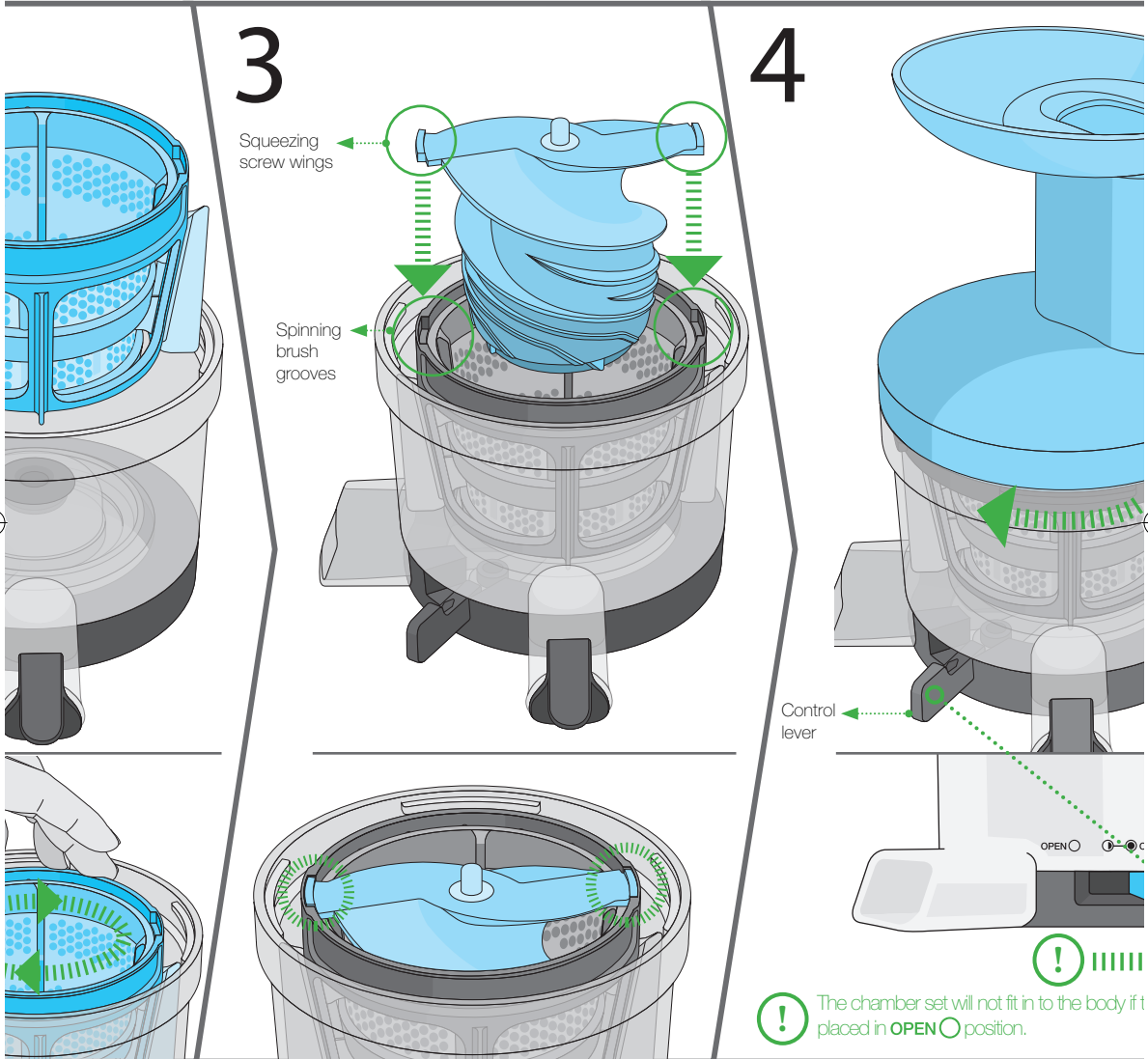
How to assemble



Assemble the strainer under the groove of spinning brush just like from the picture.

If they are not completely assembled, the chamber set will not be closed.

Put the assembled part in pr
moving left and right in the cl
like the picture no. 1.

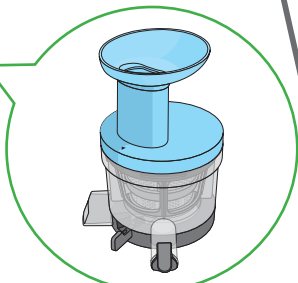
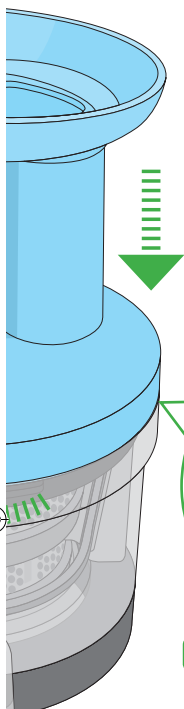


in proper place by
the chamber just

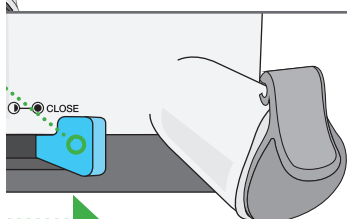
Assemble the squeezing screw like the picture.
Put the squeezing screw by turning it to fit in the
spinning brush grooves.

After putting the hopper on the char
is locked completely.
! Make sure the control lever is p

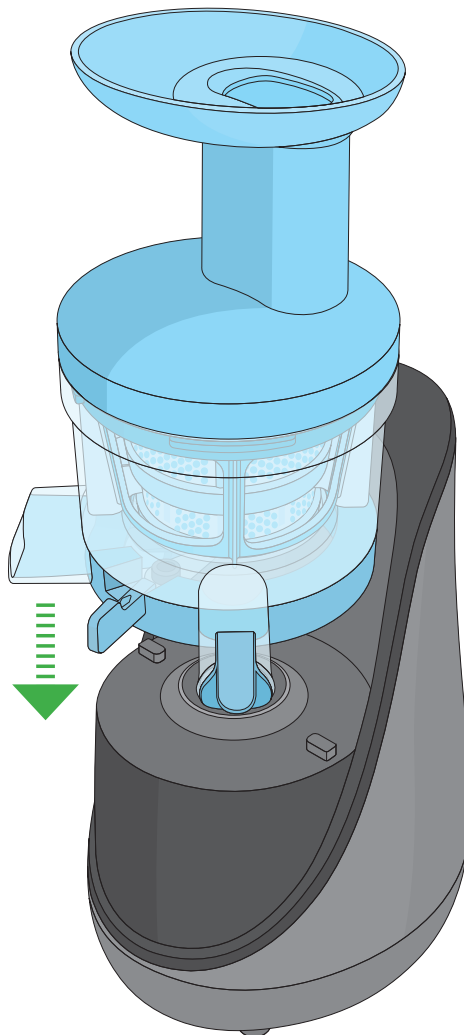
5



TIP Even if it is assembled in opposite direction, it is operable.



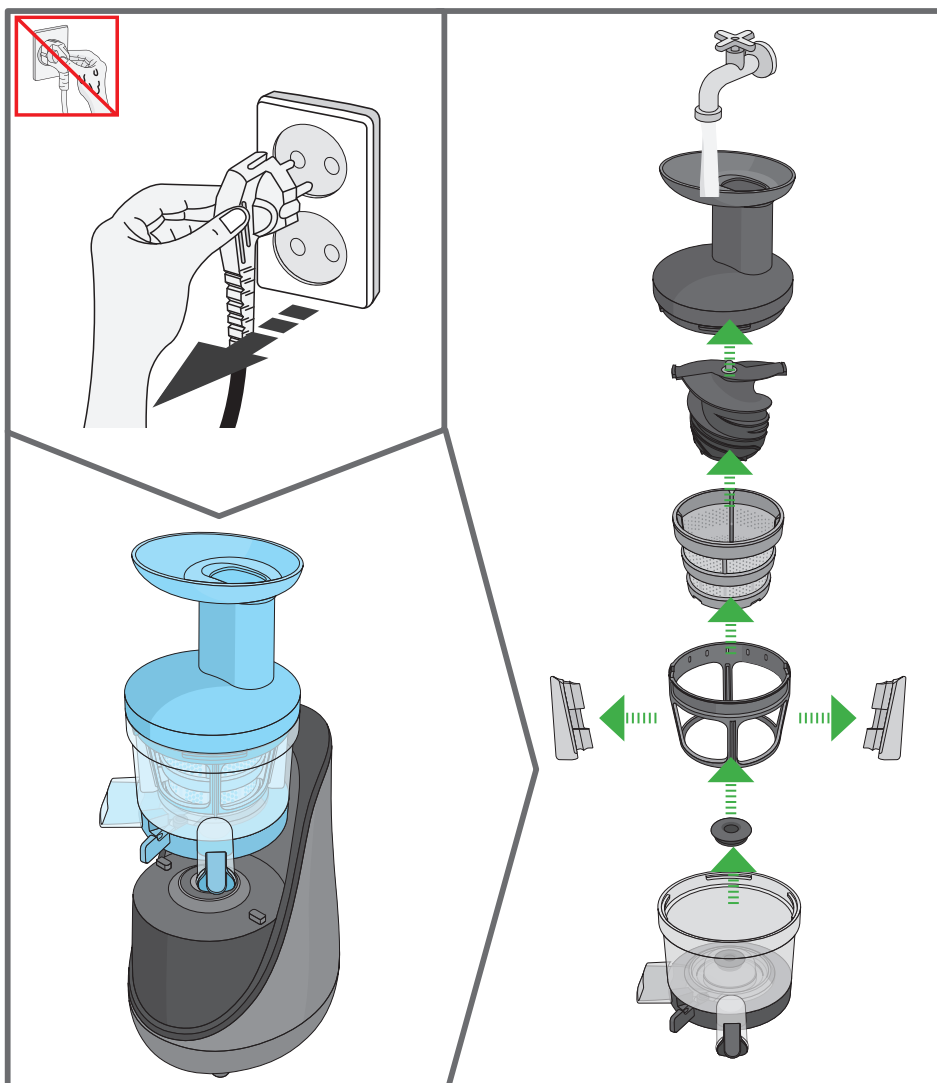
only if the control lever is



chamber, turn it clockwise until it
is placed in **● CLOSE** position.

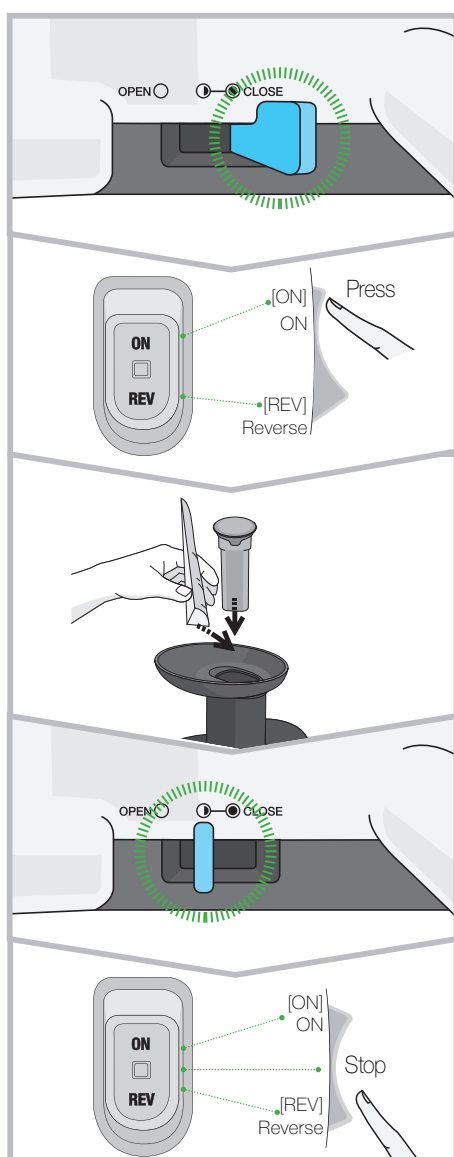
Mount the chamber set on the body.

Disassemble and cleaning



Remove the chamber set from the body.
Disassemble the chamber set in reverse order.
Clean the chamber set with a cleaning brush under running water.
Please wipe the body with a soft and dry cloth.
Silicon packing can be disassembled for clean-up.


How to use



1 Place the control lever **CLOSE** position before operating.

2 Press **[ON]** button to start.

3 Put ingredients gradually in the hopper chute and press with the pusher.

4 Put the control lever in half-closed () position before putting the last ingredients.

The hopper will be opened easily as long as the residues in the strainer are released.

5 After extraction is completed, place the switch in stop position to stop.

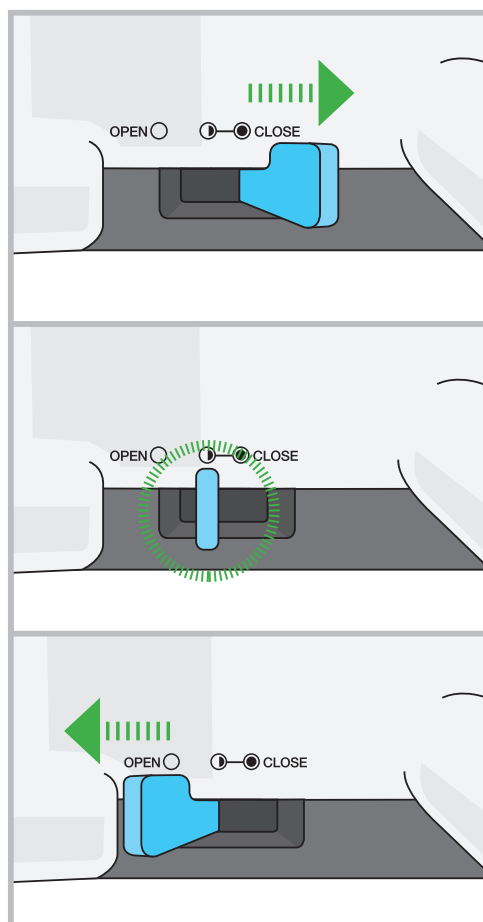


When using **[ON]** or **[REV]** button, make sure that the squeezing screw stops completely.

Instructions of control lever

How to use control lever

You can open and close the extraction packing easily.



Preparation, Extraction Mode

CLOSE

For general ingredients, the extraction rate is good when you close (● **CLOSE**) the control lever during operation.

However, for fruits which have hard seeds such grapes, rubus coreanus, pomegranate you close the control lever during operation and then change it to half-closed (◐) position when juice begins to come out.

Completion, Simple Cleaning Mode

◐

Release the residues in half-closed (◐) position of the control lever when putting in the last ingredients. The hopper will be opened easily as long as the extracted residues are released.

For Simple Cleaning Mode, put the control lever in half-closed (◐) position and release the residues.

Cleaning Mode

OPEN

When detaching and cleaning the chamber, put the control lever completely in (○ **OPEN**) position.

You can easily and conveniently clean the chamber.



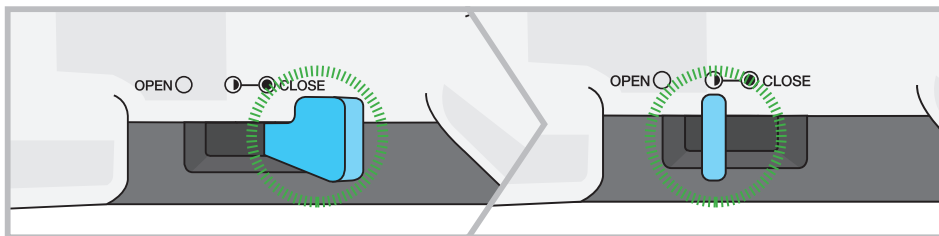
When it is hard to open Hopper after operation.

- Put the control lever in half-closed (◐) position and press Reverse button for 3~4 seconds. Repeat this for 2~3 time and the hopper will be opened easily.

How to use the control lever by ingredients

Ingredients

Apple, pear, melon, watermelon, strawberry, blueberry, orange, grapefruits, lemon, mango, plum, peach, cherry, persimmon, pineapple, wheat-grass, parsley, celery, dandelion, carrot, ginger, potato, beet, tomato, paprika, broccoli, cauliflower, cabbage, kale, spinach
(Cooked) sweet potato, pumpkin, corn, nuts, almonds, beans, sesame

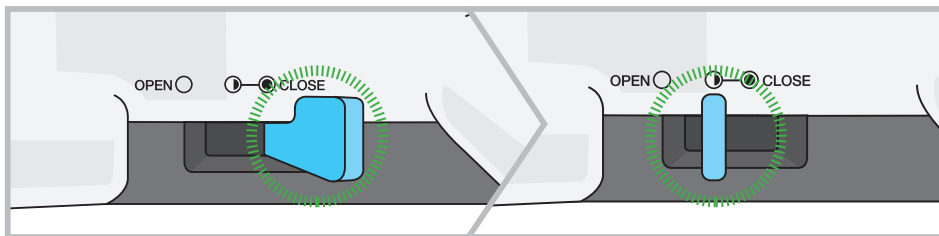


1. Start. ● CLOSE position.

2. When extraction is almost finished, place the control lever into, ① Half-Opened position

Seed ingredients

Grapes, pomegranate, blackberry, kiwi

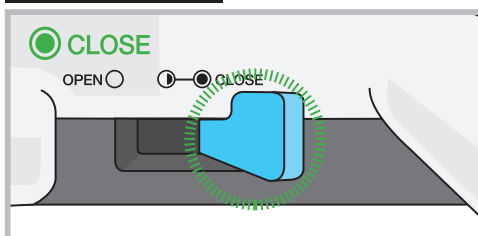


1. Start. ● CLOSE position.

2. When juice starts to come out, place the control lever into

Mixed with Milk

Banana, strawberry, blueberry, etc.



1. Start. ● CLOSE position.



Cautions during operation

- **Ingredients which needs caution**

- Fruits with hard seeds such as persimmon, Japanese apricot, lemon, plum, peach etc. that are hard to chew with our teeth should be pitted before extraction.

- For stalk vegetables with strong fiber such as water parsleys, celery etc. cut them into small size about 3~4cm before putting them into the hopper chute.

- Do not put in sesame, coffee beans, bark of the tree, Chinese pepper, etc. which cannot be extracted.

- Do put in fruits preserved in alcohol, sugar, honey, etc. (grapes, apricot, berries, etc) and enzymes (glasswort, houseleek, etc.). It may cause damage or failure.

- **We recommend you drink green vegetable juice and fruit juice immediately after extraction rather than keeping them for long time.**

- **You may use for crushing spice (garlic, red pepper), but not for grinding grain.**
It may cause damage or failure.

- **Do not re-squeeze reidues expelled through the pulp outlet.**
Soft fruits can be re-squeezed.

- **Do not operate the appliance before putting in the ingredients.**

- **Do not use the appliance for more than 30 minutes continuously.**

- It may cause a failure due to overheating of the motor.

- When using continuously, stop it and leave it 5 minutes of interval and then you may use it again.

- **Never insert finger, fork or spoon etc. into juice outlet during the operation.**

- Inserting such as chopsticks etc. into Juice outlet during operation may stuck in the spinning brush and may cause damage of parts.

- **Do not press the ingredients with anything except the pusher.**

- It may stuck to the screw and cause injury and failure.

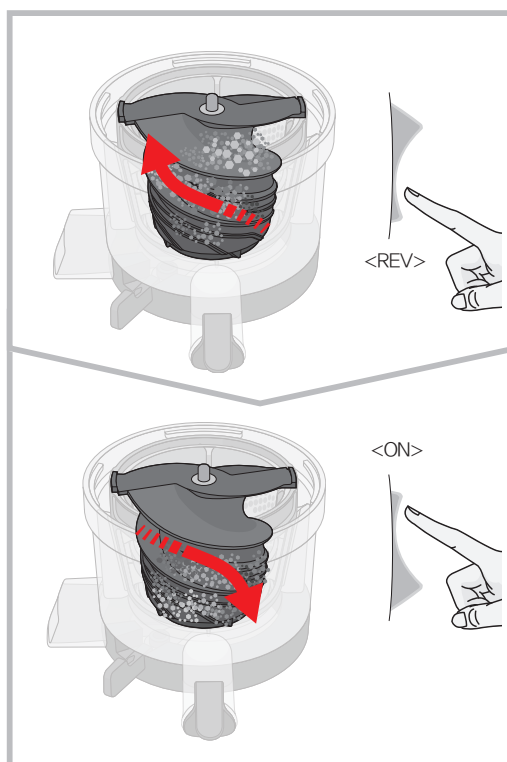
- **Do not operate the switch with wet hands.**

- It may cause electric shock or fire. Do not put foreign objects near the switch.

Note

Frozen fruit or withered ingredients that have been stored in the refrigerator for a long time may give us less extracted amount or may even be impossible.

When the squeezing screw stops during the operation



1 Press [REV] button on the operating switch for 3~5 seconds and stop it. Repeat this 2~3 times.

- ▶ [REV] is the button to push back the ingredients upward.
[REV] only works while pressing the button, and the rotation of the squeezing screw stops if you release the button.

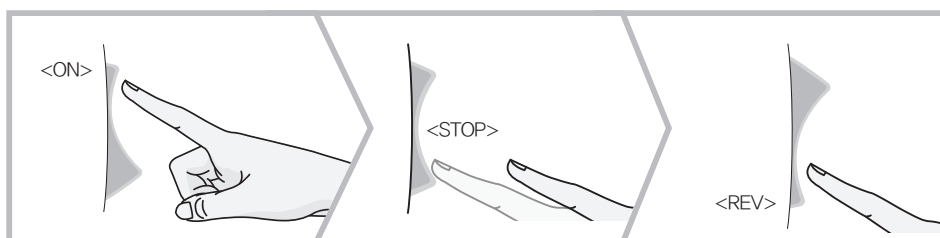
2 Press [ON] button to operate after reverse operation completely stops.

- ▶ When using [ON] or [REV] button, make sure that the squeezing screw stops completely.

Note

Even after following the directions above and still doesn't work, please unplug the power cord and disassemble chamber set, and clean it. And try it again.

Caution when using operation button



In case of reversing during operation, press [Reverse] button short, then you press [Reverse] button for operation.

From the feature of the product, even though you stop the operation, it doesn't stop right away. It rotates slowly then stops. If the rotation stops completely, you may press the button to any direction you want. (Same as when pressing [Extract] during reverse operation)

Please check the details below before contacting Technical Support for repair.

If you need additional information, please contact your local Customer Service Center or visit www.hurom.com. When applying for after-sales service, please have the manufacturer's serial number or bar code available.

The Appliance does not work.

Make sure that the power cord is properly plugged in.

Check if the hopper is assembled properly. If the hopper has not been locked into place, the appliance will not operate for safety reasons.

Check if the appliance is assembled according to the directions in the manual.

Refer to instructions for assembly in the manual or consult with your Customer Service Center for additional assistance.

The hopper does not open.

There might be a lot of residues inside. Put the control lever in half-closed position, and press [Extract] button to release residues. Press [Reverse] button for 3~4 seconds and stop it. Repeat this process 2~3times.

Have you placed any foreign substances or solid objects (hard seed such as persimmon seed) in the juicer?

Press [Reverse] button and push the ingredients back up toward the hopper chute.

Do not attempt to open by force. Please contact your local Customer Service Center for assistance.

The appliance stops during normal operation.

Have you in heavy loads or large pieces of ingredients into the appliance?

Refer to page 9 of the manual and follow the guideline for using [Reverse] button.

If the issue is not resolved after following the above process, please contact your local Customer Service Center.

There are fine lines or scratch marks around the squeezing screw.

These are molding marks resulting from the normal manufacturing process.

This is a normal product and there is no problem for use.

Juice leaks over the body.

Have you inserted a lot of ingredients into the hopper chute?

If you insert a large amount of ingredients compared to the pulp outlet, the packing is slightly pushed away, so the juice leaks out of the gap. Do not put too much ingredients by force and just put gradually for extraction.

The Chamber shakes when squeezing.



Slight shaking may be caused by the motor.

Depending on the texture of the ingredient, there may be slight to more pronounced shaking of

This is a normal phenomenon as squeezing screw rotates and it is not a malfunction. Hard ingredients

(e.g carrot, potato, radish, beet, etc.) may cause more shaking than soft ingredients.

Chamber set does not fit into the body.

If the control lever is in **OPEN**  position, the chamber set does not fit in to the body. Before assembling the chamber set, make sure that the control lever is in **CLOSE**  position.

Product Specifications

● Product Name	Hurom Slow Juicer	● Cord Length	1.4 m
● Model Name	HN Series	● Motor	Single-phase induction motor
● Rated Voltage	230 - 240 V	● Fuse	250 V 5 A
● Rated Frequency	50 Hz	● Weight	6.3 kg
● Rated Power Consumption	150 W	● Outward Dimension	Width 237 mm Length 185 mm Height 402 mm
● RPM	43 rpm	● Rated Operating Hour	Less than 30 minutes

Warranty

● Product name	● Customer name	● Model name
● Supplier	● Date of purchase	
● Address	● Manufacture's serial number	

Important: For better protection of your purchase, fill out and mail this form to a local distributor where you purchased the appliance and keep the original receipt.

This certifies that the Hurom Slow juicer is covered under warranty by **Hurom** to be free from defects in material construction and workmanship.

Hurom provides warranty for ten (10) years for the motor and two (2) years for other parts from the date of purchase by the original purchaser. Coverage is valid only with proof of purchase from an Authorized Local Distributor. (No international warranty available)

This warranty does not apply to damages caused by accident, misuse, abuse, commercial use, alteration, failure to follow operating instructions, or damage caused by parts or service unauthorized by **Hurom**. Damages caused by transportation must be claimed with carrier.

Hurom disclaims all responsibilities for consequential damages from incidental losses caused by use of this appliance.

For service and assistance with technical difficulty, please contact our local customer care center.

Hurom

Manufacture : **Hurom** | Hurom webpage : www.hurom.com

MEMO

MEMO

How to trim the ingredients !

Apple, pear, kiwi,
oriental melon

Juice fruits like apple, pear, kiwi, oriental melon, etc. put them with seeds and peels. However, apple seeds contain toxicity, so it better to remove them.

Pomegranate, grapes

Separate each grape from the cluster. Peel the pomegranate and use flesh only.

Watermelon, orange,
grapefruit

Peel off the skin of watermelon, orange, grapefruit and cut them into right size.

Mango, cherry,
peach

Fruits like mango, cherry, peach, or plum, etc. have hard seeds which are hard to swallow. Those seeds might cause stoppage or parts damage, so they must be removed before using it.

Wheat, chives

Put a handful of wheat or chives in not to be scattered.

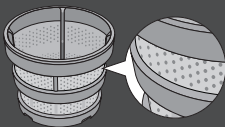
Water parsleys,
angelica, celery, kale

Cut fibrous ingredients into small sized less than 3 cm.

* This is a reference about how to trim the ingredients, so if you have allergy please choose your own proper ingredients which agrees with you.

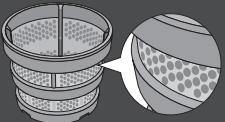
* Please refer to the recipe book for the product usage of each ingredient.

Which one is better, Fine Strainer or Coarse Strainer ?



Fine Strainer

Fine strainer has tiny and fine holes which is good to make clean juicer.



Coarse Strainer

Coarse strainer has larger holes so it is good to make thick juice with flesh in it. It is to make juice with soft fruits and thick juice like banana, strawberry, and also useful for smoothie, latte, or soup.

HUROM

www.hurom.com | Made in Korea
Copyright© All Rights Reserved by HUROM

4DC010380_V.01